

# High Quality Pumps for Den Breejen Shipyard

Since 1947 Den Breejen Shipyard has produced high-quality vessels like passenger vessels, ferries, container and dry cargo ships, tankers, work boats and pontoons. River cruise vessels and ferries are specialties of Den Breejen and many DESMI pumps are onboard.

For more than 25 years, DESMI has supplied pumps for Den Breejen Shipyard in Hardinxveld-Giessendam, the Netherlands.

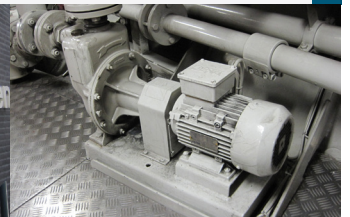
DESMI Pumps are used for the following applications:

- Fire-Fighting
- Lube Oil
- Fuel Oil
- Exhaust Systems
- Ballast
- Cooling Water



Purchaser Gertjan Molendijk in front of a river cruise made at the shipyard in Hardinxveld-Giessendam

CASE STORY



For Purchaser Gertjan Molendijk it is important that the quality is good and he knows that when purchasing DESMI pumps he will get high quality products.

*"We have used the DESMI pumps for many years on board the ships and it is easy to be a customer. The quality of the pumps is high, we know the price and we always have an excellent support from the sales team in the Netherlands", says Gertjan.*

Den Breejen Shipyard does new builds, retrofits, repairs and service and the facilities in Hardinxveld-Giessendam includes;

- Two preparation halls
- A construction hall featuring overhead cranes with a capacity up to 40 tons
- Finishing docks with a capacity up to 150 metres
- A well-equipped machine shop

The types of DESMI pumps used at Den Breejen Shipyard are centrifugal pumps, type VAC, SA & ESL.



DESMI SA Centrifugal pump installed onboard a new river cruise ship.